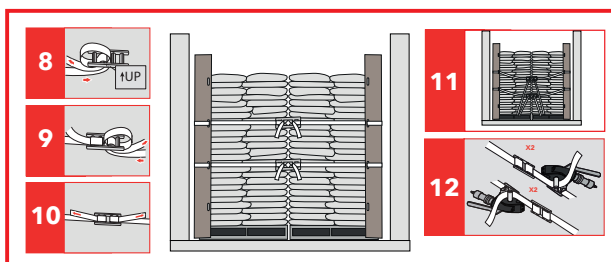
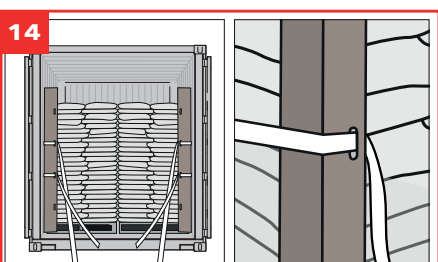
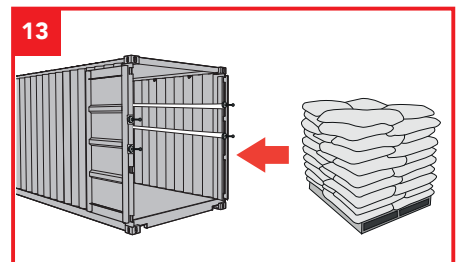
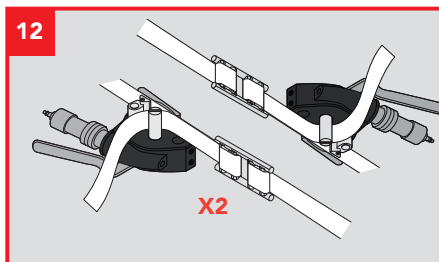
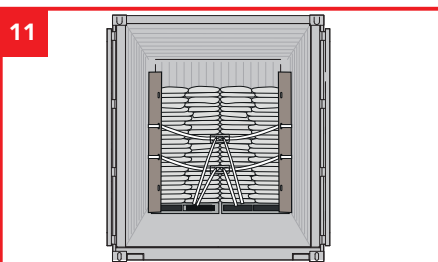
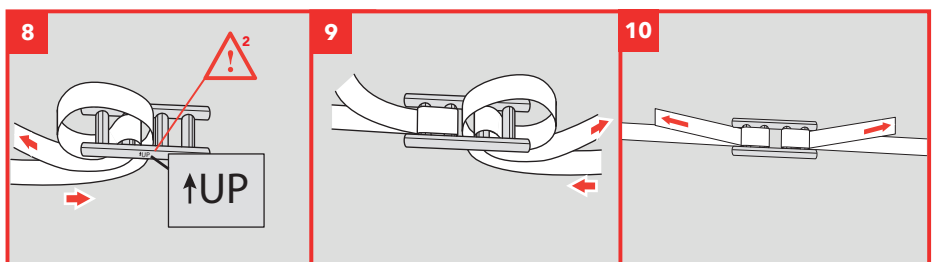
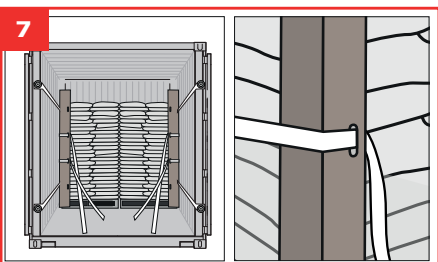
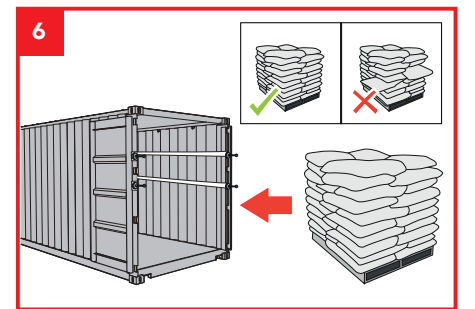
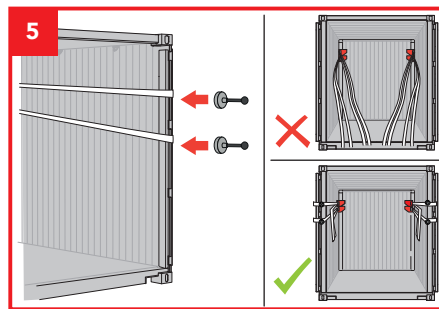
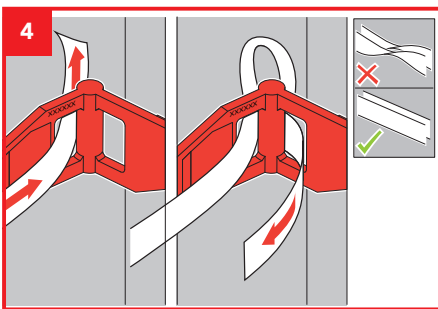
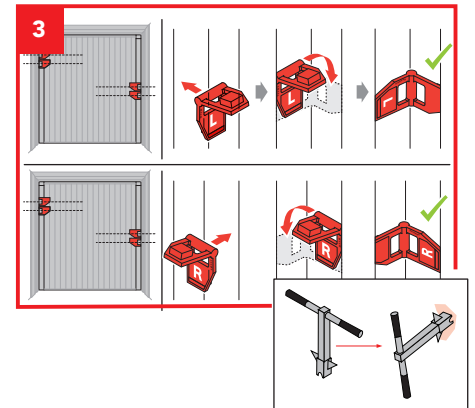
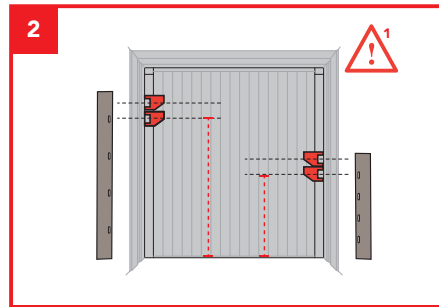
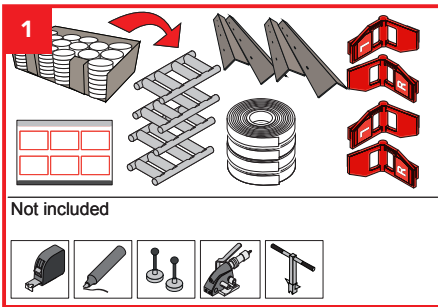


## Cordstrap CornerLash® - Soft Packaging 40ft AAR



**1**

Do not apply the Corner Element below the recommended height. Wrong application of the Corner Element may lead to reduced system performance or solution failure.

**2**

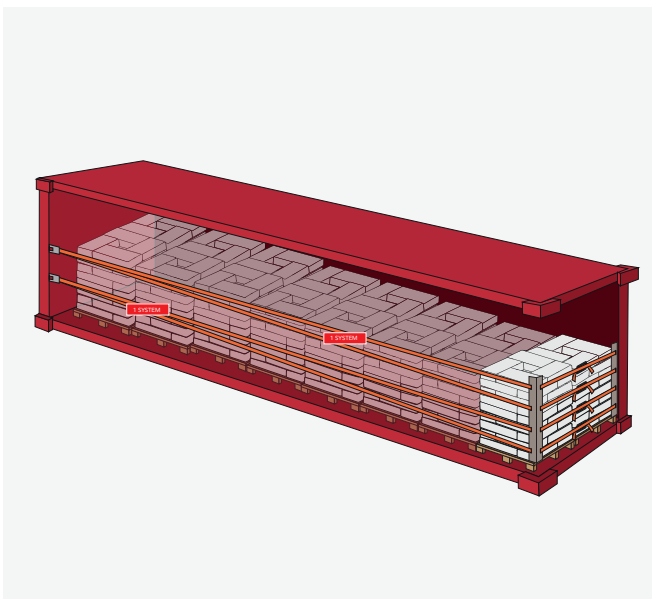
Do not apply the buckle up-side down. Wrong application of the buckle may lead to reduced system performance or solution failure.

Keeping the world's cargo safe

# cordstrap

## This container is secured with Cordstrap CornerLash®

Specifically designed to secure cargo up to 30.000 kg / 66,000 lbs in containers



### Cargo Details

Weight:

No. Systems applied:

#### CornerLash®

System Breaking strength	12.000 daN / 26,400 lbf
System MSL	6.000 daN / 13,200 lbf

AAR Approved for non hazardous chemicals

Conform CTU Code  
EN 12195-1:2010



Lloyd's  
Register

