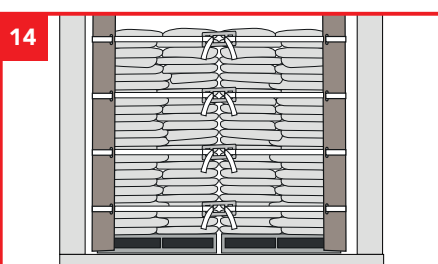
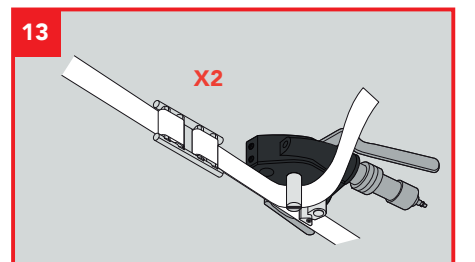
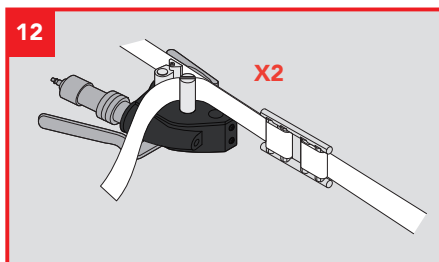
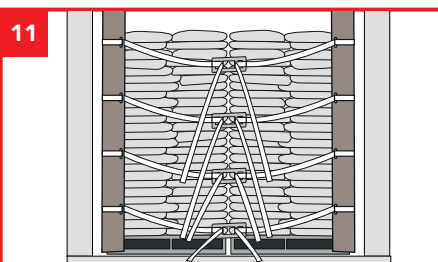
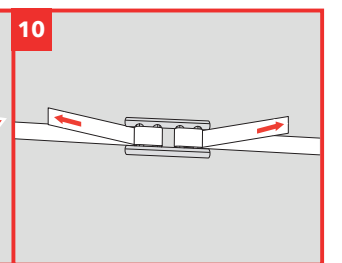
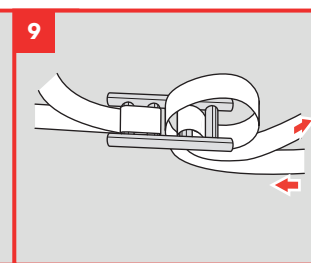
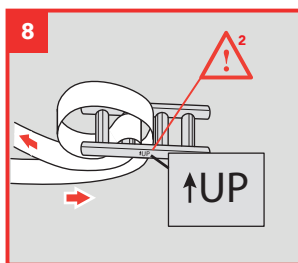
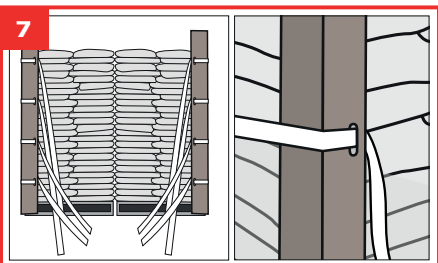
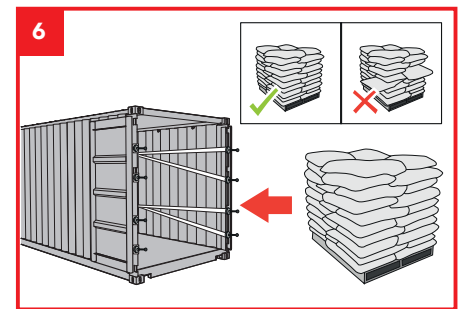
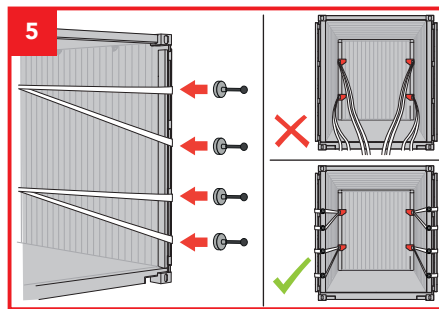
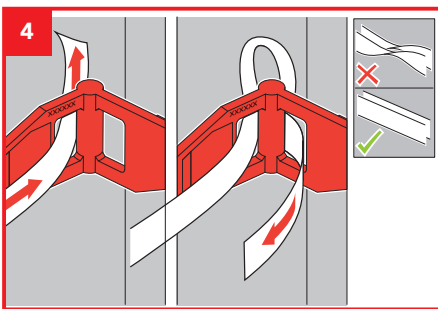
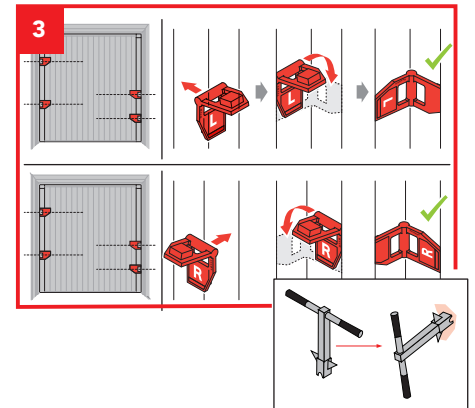
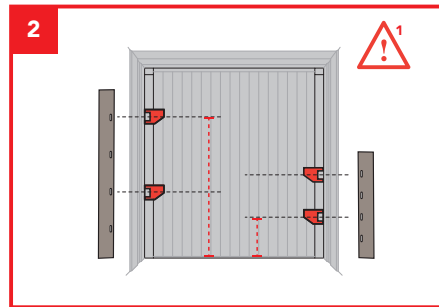
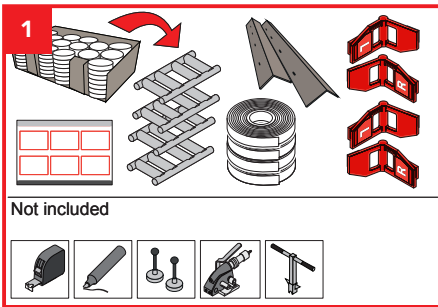


Cordstrap CornerLash® - Soft Packaging 20ft AAR



Do not apply the Corner Element below the recommended height. Wrong application of the Corner Element may lead to reduced system performance or solution failure



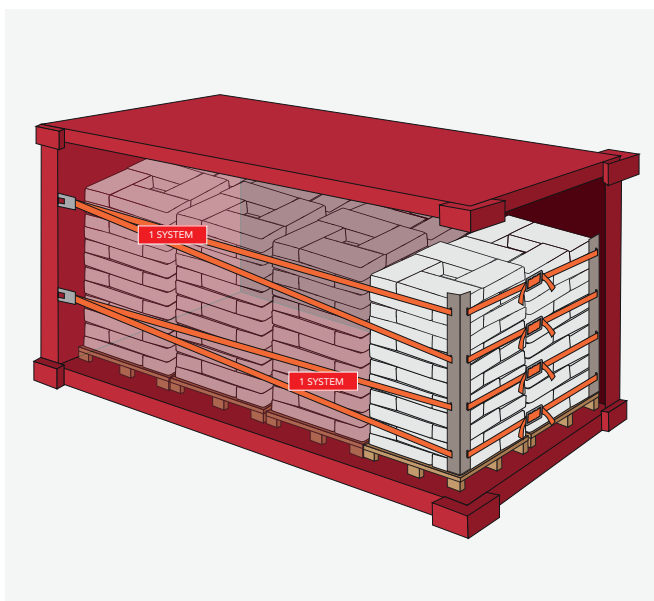
Do not apply the buckle up-side down. Wrong application of the buckle may lead to reduced system performance or solution failure.

Keeping the world's cargo safe

cordstrap

This container is secured with Cordstrap CornerLash®

Specifically designed to secure cargo up to 30.000 kg / 66,000 lbs in containers



Cargo Details

Weight:

No. Systems applied:

CornerLash® AAR

System Breaking strength	12.000 daN / 26,400 lbf
System MSL	6.000 daN / 13,200 lbf

AAR Approved for non hazardous chemicals

Conform CTU Code
EN 12195-1:2010



Lloyd's
Register

