

Cordstrap CornerLash®

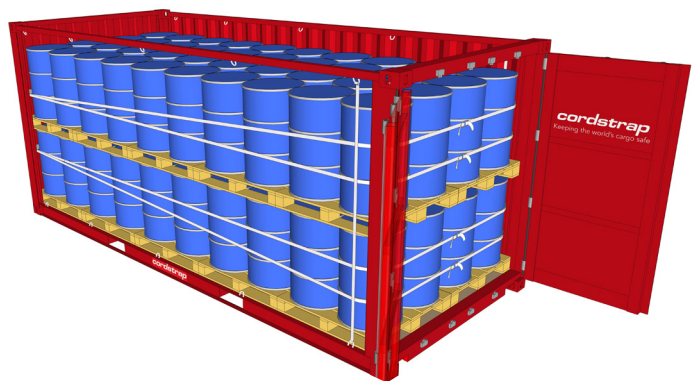
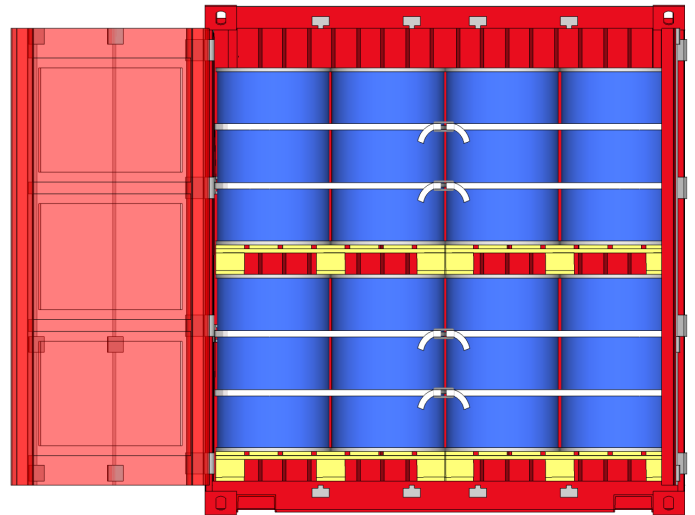
Fully compliant cargo protection

At Cordstrap, our cargo-securing experts understand that each customer has a particular set of needs. So our protection solutions deliver flexibility to meet your specific requirements.

CornerLash®, our fully compliant cargo protection solution is the answer when delayed or damaged cargo is not an option. CornerLash® enables heavy cargo to be secured in an easy, efficient and consistent way.

This solution uses the strongest part of the container – the corner posts – to provide optimal security for heavy loads in transit. Suitable for many types of heavy loads, the CornerLash® solution ensures cargo is secured safely and efficiently. 'Plug and Play' components include load specific add-ons such as engineered protectors for IBC's and EdgeBoards specially designed for soft packaging.

Complying fully with the latest rules and regulations, CornerLash® supports your responsibilities as a shipper, ensuring your cargo gets through port controls smoothly and arrives at its destination safely and in perfect condition.



Cordstrap CornerLash® protects your cargo, your people and your brand



COMPLIANT

CornerLash® is CTU Code compliant and is fully certified by the AAR and Maritem.



SAFE & SECURE

CornerLash® is the only solution that uses the strong container corner posts to secure cargo. It easily protects cargo weights many times the full payload of a container.









TIME & COST EFFICIENT

Plug and play components and per container packaging allow one operator to secure a fully compliant container in under 10 minutes with CornerLash®.

Specifications Cordstrap Container Solution			
Solution Performance Specifications		Cordstrap CornerLash® AAR	Cordstrap CornerLash®
 <p>1 System</p>  <p>1 Solution</p>	<p>CornerLash® Specification</p> <p>System Breaking Strength MSL</p> <p>Solution Breaking Strength</p> <p>Elongation at MSL</p> <p>Required pre-tension</p> <p>Recommended pre-tension</p>	<p>12.000 daN / 26,400 lbf</p> <p>6.000 daN / 13,200 lbf</p> <p>24.000 daN / 52,800 lbf</p> <p><5.5%</p> <p>3.000 daN / 6,600 lbf</p> <p>-</p>	<p>6.000 daN / 13,200 lbf</p> <p>4.500 daN / 9,900 lbf</p> <p>12.000 daN / 26,400 lbf</p> <p><9%</p> <p>-</p> <p>450-2.250 daN / 1,013 - 5,063 lbf</p>
	<p>Certification</p>	<p>AAR approved, Lloyd's and MariTerm</p> <p>CTU Code Compliant certified</p> <p>Eurosafe Certified</p>	<p>Lloyd's and MariTerm CTU Code</p> <p>Compliant Certified</p> <p>Eurosafe Certified</p>
Corner Element Specification			
<p>Breaking Strength MSL</p> <p>Material</p> <p>Pieces required per solution</p> 		<p>6.000 daN / 13,200 lbf</p> <p>3.000 daN / 6,600 lbf</p> <p>Galvanized Steel</p> <p>4</p>	<p>6.000 daN / 13,200 lbf</p> <p>3.000 daN / 6,600 lbf</p> <p>Galvanized Steel</p> <p>4</p>

Edge protection and HangStrap: used to keep the lashing in an optimal position and fully protect your cargo			
			
EdgeBoards (soft packaging)	FlexBoards (drums and big bags)	IBC Protector	HangStrap

Use the recommended tools to enable easy, fast and consistent application					
					
CornerLash® Application Tool	Manual Tensioner CT40 (2)	Battery Tensioner CBT35	Pneumatic Tensioner CT40 PN Cordlash Woven	Pneumatic Tensioner CT50 PN	Container Magnets

Loading plans			
			
AAR	AAR	Non-AAR	Non-AAR

We recommend storing all Cordstrap Products in a cool and dry environment out of direct sunlight and between -5°C and 40°C / 23°F and 104°F.
All information given are based on accuracy at time of printing.