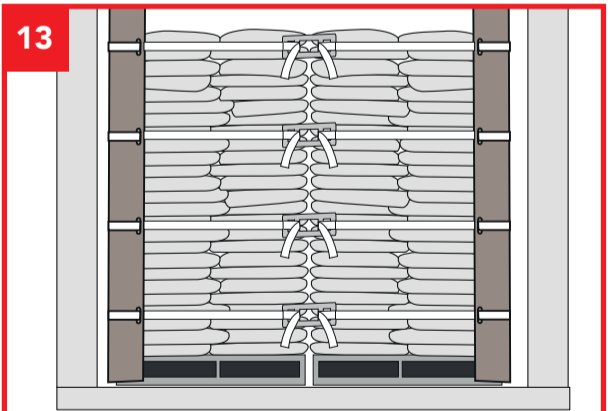
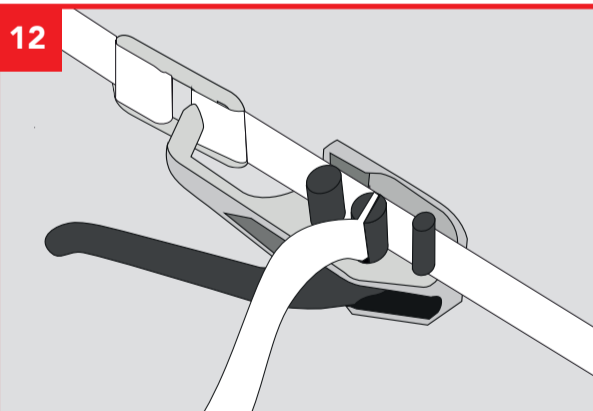
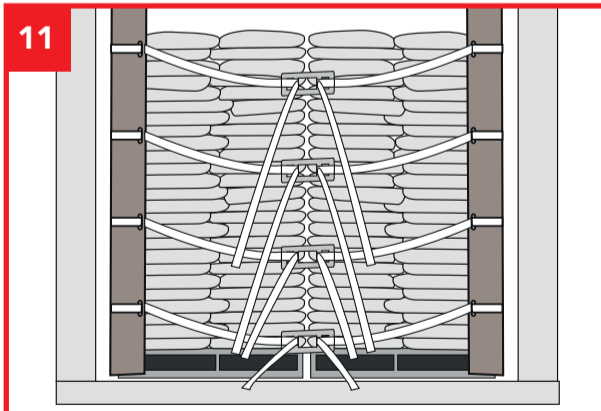
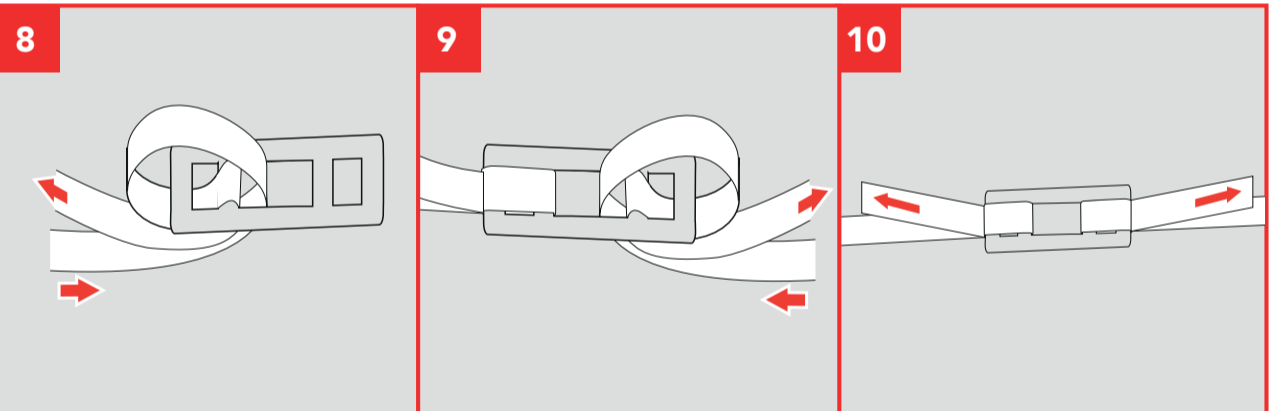
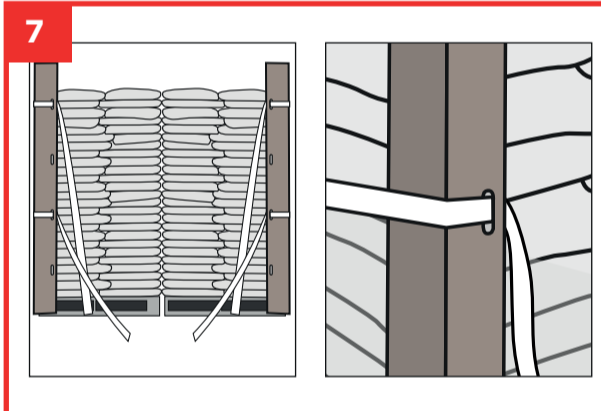
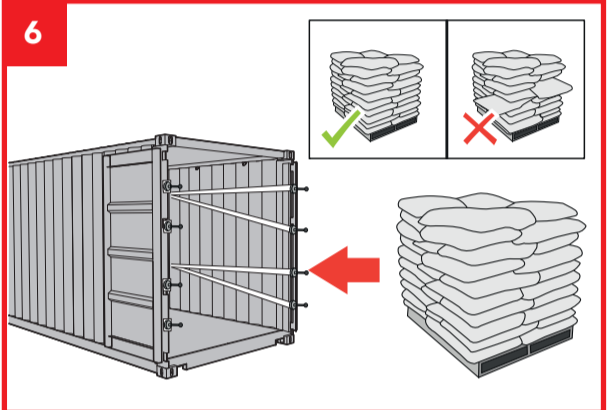
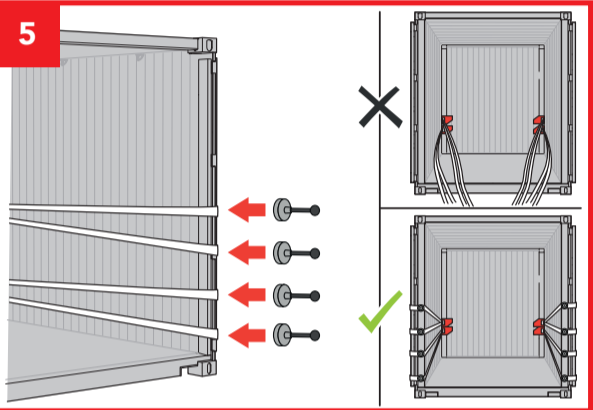
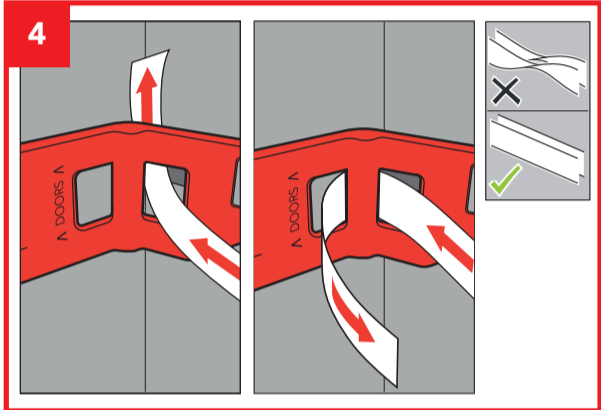
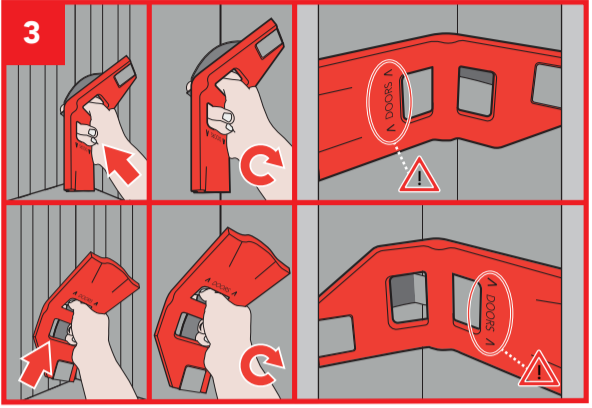
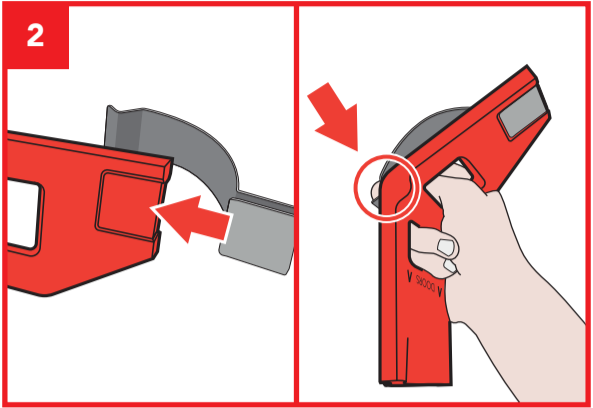
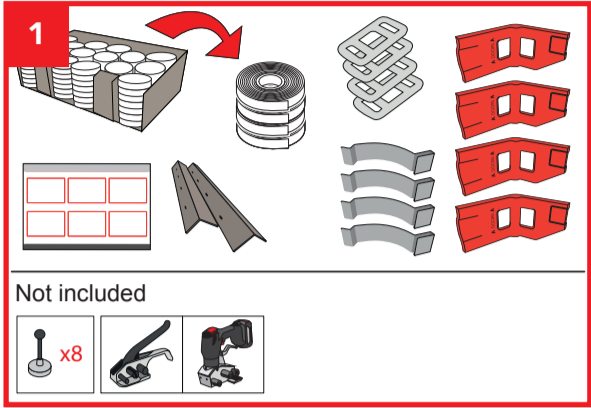


Cordstrap CornerLash® 105.4 20FT – Soft Packaging



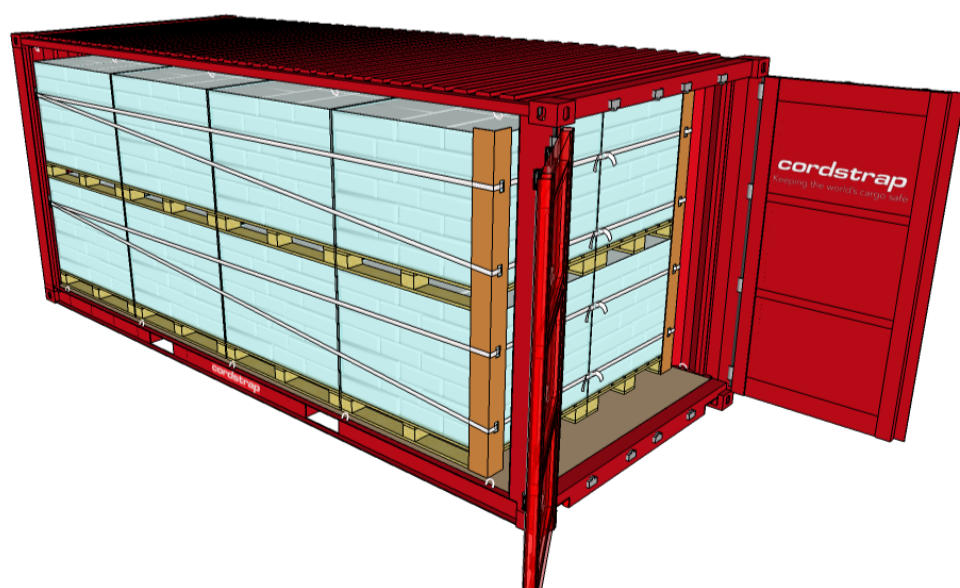
Keeping the world's cargo safe

cordstrap

This container is secured with Cordstrap CornerLash®

Cargo Details

Cargo Weight:



| Transport mode | Max Cargo Weight* |
|----------------------------|--------------------------|
| Road doors to front | 19.800 kg / 43,560 lb |
| Road doors to back | CONTAINER PAYLOAD |
| Rail no shunting | CONTAINER PAYLOAD |
| Sea unrestricted | 27.600 kg / 60,720 lb |

*Calculations according CTU-code (2014), friction coefficient $\mu = 0,45$
average lashing angles.
Certified by Maritem (Certificate CS2016002)

Conform CTU Code
EN 12195-1:2010

