

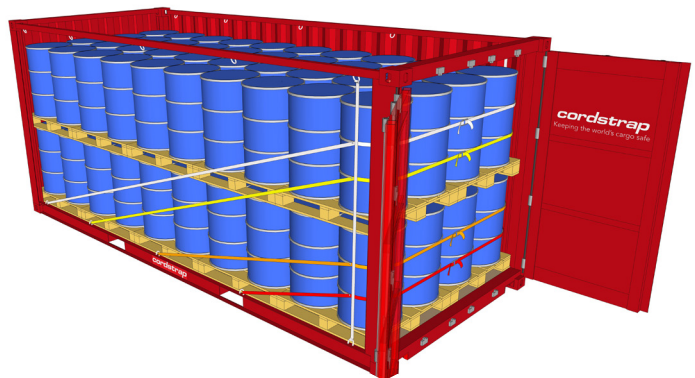
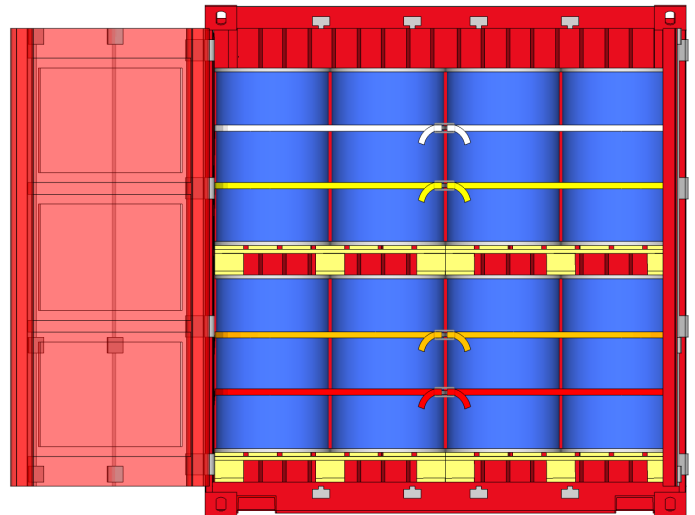
Cordstrap AnchorLash®

Versatile cargo protection

At Cordstrap, our cargo-securing experts understand that each customer has specific requirements for cargo securing. That's why our flexible protection solutions have been designed to adapt to your needs and your cargo.

Suitable for many types of light loads, including carton boxes, plastic drums, big bags, cans and other soft packaging – in both 20 ft and 40 ft containers – the AnchorLash® solution ensures cargo is secured in the safest and most efficient way possible, no matter the cargo type, location or team.

Complying fully with the latest rules and regulations, AnchorLash® supports your responsibilities as a shipper, ensuring your cargo gets through port controls smoothly and arrives at its destination safely and in perfect condition.



Cordstrap AnchorLash® protects your cargo, your people and your brand



VERSATILE

AnchorLash® is a modular solution. In combination with high quality add-ons, this allows for truly tailored cargo protection.



TIME & COST EFFICIENT

Supplied and packaged with all components needed for a single container, AnchorLash® can be installed by one operator in just eight minutes.



SAFE & SECURE

AnchorLash® uses the strongest existing anchor points in a container, ensuring consistently high securing, no matter the cargo type or modality.



COMPLIANT

AnchorLash® carries Maritern and Eurosafe certification and easily protects the full payload of the container.

Specifications Cordstrap Container Solution: Cordstrap AnchorLash®

Solution Performance Specifications

Anchor point MSL	1.000 daN / 2,200 lbf
System Breaking Strength	4.000 daN / 8,800 lbf
MSL	2.000 daN / 4,400 lbf
Solution Breaking Strength	8.000 daN / 17,600 lbf

Anchor point MSL	2.000 daN / 4,400 lbf
System Breaking Strength	6.000 daN / 13,200 lbf
MSL	4.000 daN / 8,800 lbf
Solution Breaking Strength	12.000 daN / 26,400 lbf

Elongation at MSL	<9%
Recommended pre-tension	450 - 2.250 daN / 1,000 - 5,000 lbf

Certification	Lloyd's and Maritem CTU Code Compliant certified Eurosafe Certificate for soft packaging
---------------	---



Edge protection and HangStrap: used to keep the lashing in an optimal position and fully protect your cargo



EdgeBoards
(soft packaging)



FlexBoards
(drums and big bags)



IBC Protector



HangStrap

Edge protection can be used in a reefer container with a Reefer Lashing Point



Reefer Lashing Point



Use the recommended tools to enable easy, fast and consistent application



Manual Tensioner
CT40 (2)



Battery Tensioner
CBT35



Container Magnets

Loading plans

